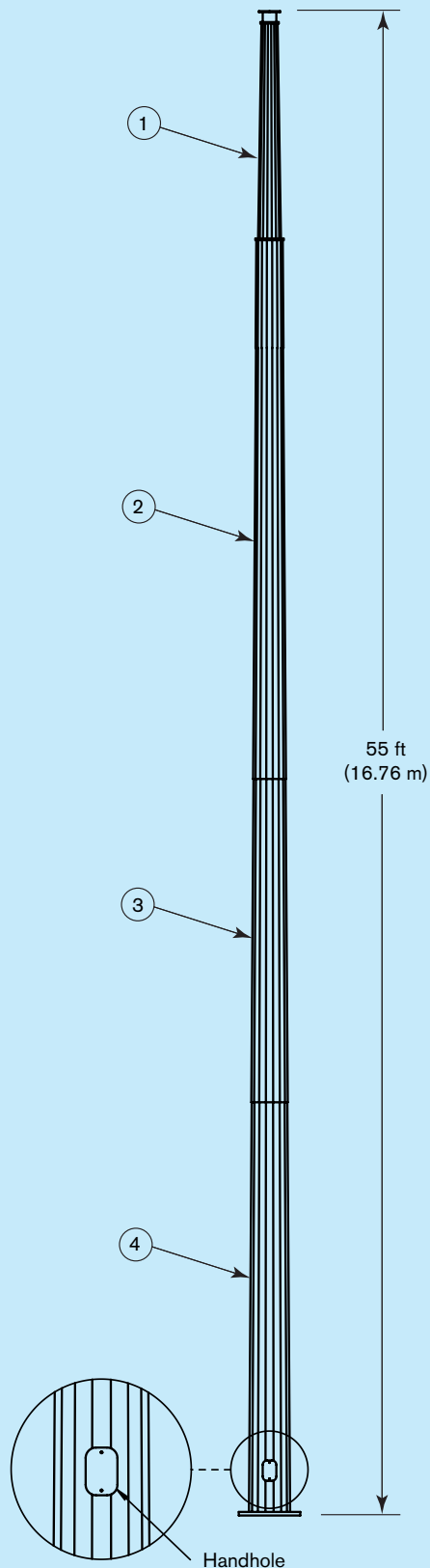


## Side View



# SKYSTREAM™

## 55-23 (55 ft/16.76 m) Segmented Monopole Tower - NEW

By popular demand, Southwest Windpower has designed this 55 ft monopole tower that packs in nested segments for easier shipping. Includes handhole for ease of wiring (eliminates need for separate J-box) and pre-drilled ground-lug attachment hole. Multi-sided design adds stability to the tower. Highest tower to be easily installed with a bucket truck equipped with a jib boom.

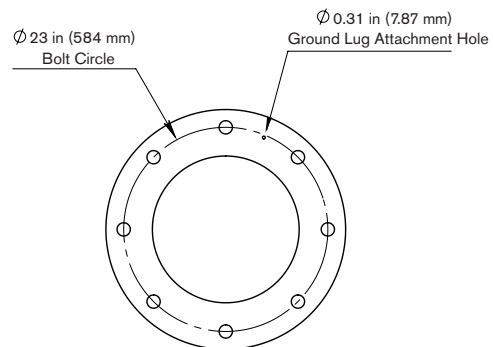
## Technical Specifications

<b>Model</b>	55-23 Skystream Tower
<b>Part Number</b>	With Land Skystream 3.7: 1-SSL-240-55-23-S With Marine Skystream 3.7: 1-SSM-240-55-23-S
<b>Foundation</b>	Mat/Pier
<b>Foundation Bolts</b>	42 in Anchor rods - bolt kit part # 3-CMBP-3258-01
<b>Height</b>	55 ft (15 m)
<b>Bolt Circle</b>	23 in (584 mm)
<b>Type</b>	Sectional monopole
<b>Construction</b>	Faceted tubular steel
<b>Number of Sections</b>	4
<b>Shipping</b>	Nested
<b>Segment Dimensions</b>	

Section	Weight lb (kg)	Length ft (m)
1	246 (111.9)	12.31 (3.75)
2	470 (213.5)	18.67 (5.7)
3	435 (197.8)	15.12 (4.61)
4	764 (347)	18.67 (5.7)
Total Weight = 1916 lb (871 kg)		

**Installation Tools** Bucket truck required

## Bottom View



## Southwest Windpower

1801 W. Route 66  
Flagstaff, AZ 86001 USA

928.779.9463

[www.skystreamenergy.com](http://www.skystreamenergy.com)

Makers of Skystream™ / AIR / Whisper