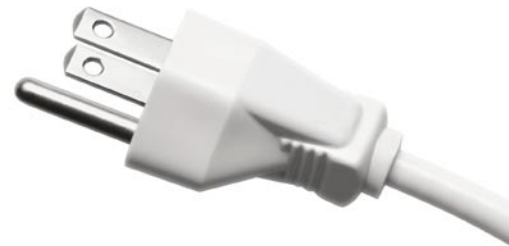
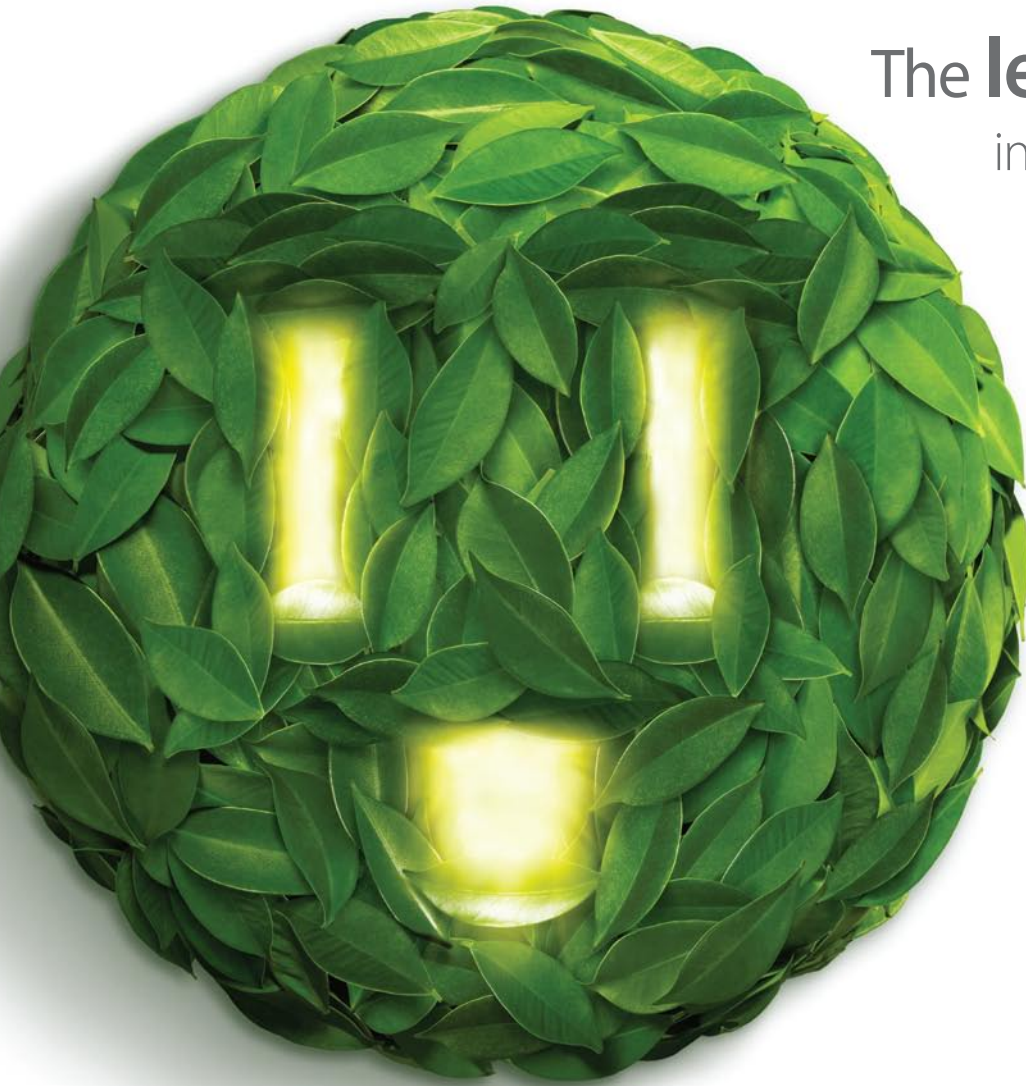


The **leading** force
in **green** power



GreenTriplex PM250M00

Mono-crystalline Photovoltaic Module

245W
265W

Power Range

245-265 Wp



Highly Strengthened Design

Module complies with advanced loading tests to meet 5400 Pa loading requirements



Light Trapping Capability

Superior performance under weak light conditions such as dawn, dusk, and cloudy days



3 Busbar Design

Enhances current transmission and module reliability

Optional



Self-clean

AUO unique photocatalyst treatment decomposes surface contamination, reduces O&M cost and increases performance

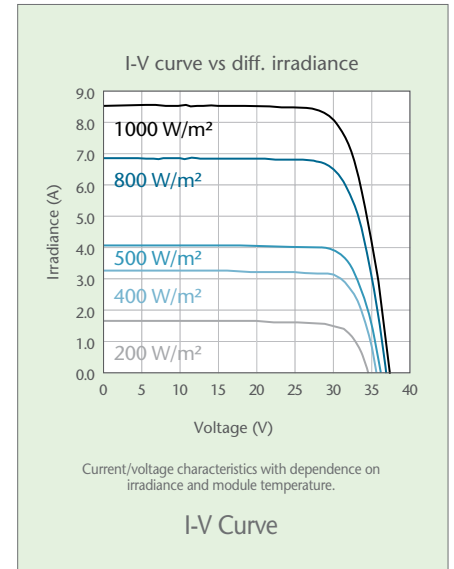
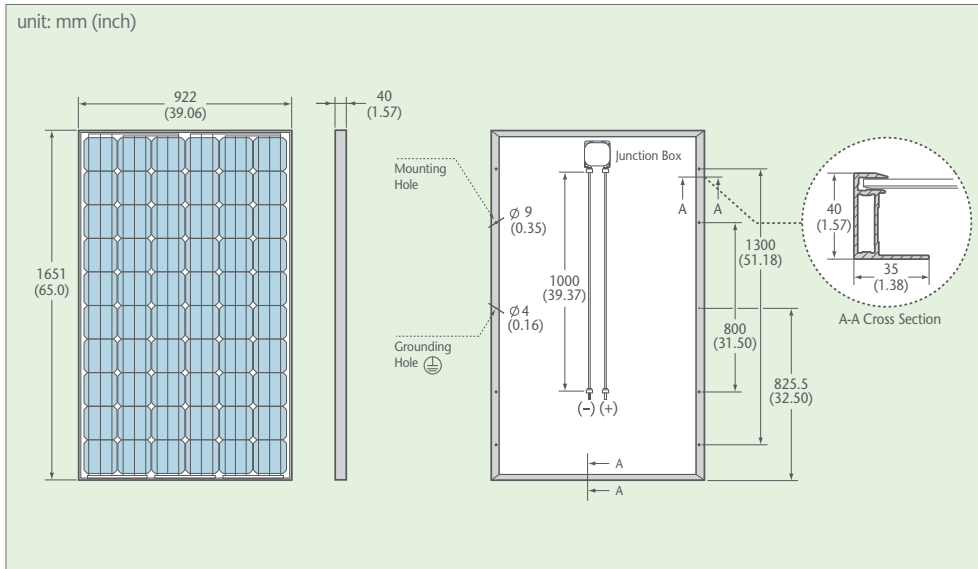


AC Photovoltaic

Integrated with a Micro-inverter, Module has high and stable AC power output via panel level MPPT



GreenTriplex PM250M00 (245-265 Wp)



Electrical Data

| Typ. Nominal Power P _N | 245 Wp | 250 Wp | 255 Wp | 260 Wp | 265 Wp |
|--|---------|--------|--------|--------|--------|
| Typ. Module Efficiency | 14.70% | 15.30% | 15.60% | 15.90% | 16.20% |
| Typ. Nominal Voltage V _{mp} (V) | 30.78 | 30.82 | 30.86 | 30.90 | 30.95 |
| Typ. Nominal Current I _{mp} (A) | 8.09 | 8.22 | 8.34 | 8.46 | 8.58 |
| Typ. Open Circuit Voltage V _{oc} (V) | 37.80 | 37.86 | 37.92 | 37.98 | 38.04 |
| Typ. Short Circuit Current I _{sc} (A) | 8.60 | 8.66 | 8.72 | 8.78 | 8.84 |
| Maximum Tolerance of P _N | 0 / +3% | | | | |

• Above data are the effective measurement at Standard Test Conditions (STC)
 • STC: irradiance 1000W/m², spectral distribution AM 1.5, temperature 25 ± 2° C, in accordance with EN 60904-3

• The given electrical data are nominal values which account for basic measurements and manufacturing tolerances of ±10%, with the exception of P_N. The classifications is performed according to P_N
 • Black backsheet is utilized for power range 245-260W; White backsheet is for 250-265W

Temperature Coefficient

| | |
|---|------------|
| NOCT | 46 ± 2° C |
| Typ. Temperature Coefficient of P _N | -0.48% / K |
| Typ. Temperature Coefficient of V _{oc} | -0.36% / K |
| Temperature Coefficient of I _{sc} | 0.03% / K |

• NOCT: Normal Operation Cell Temperature, measuring conditions: irradiance 800W/m², AM 1.5, air temperature 20° C, wind speed 1m/s

Operating Conditions

| | |
|-------------------------------|---|
| Operating Temperature | -40...+80° C |
| Ambient Temperature Range | -40...+45° C |
| Max. System Voltage IEC/UL | 1000 V / 600 V |
| IP Protection Level | IP 65 |
| Serial Fuse Rating | 15 A |
| Maximum Surface Load Capacity | Tested up to 5400 Pa according to IEC 61215 (advanced test) |

Mechanical Characteristics

| | |
|------------------------|---|
| Dimensions (L x W x H) | 1651 x 922 x 40 mm (65.01 x 39.06 x 1.57 inches) |
| Weight | 19.3 kg (42.5 lbs) |
| Front Glass | High transparent solar glass (tempered), 3.2 mm (0.13 inches) |
| Cell | 60 monocrystalline solar cells, 156 mm x 156 mm (6" x 6") |
| Cell Encapsulation | EVA |
| Back Sheet | Composite film, black / white |
| Frame | Anodized aluminum frame, black |
| Junction Box | Junction box with 3 bypass diodes |
| Cables | 1 x 4 mm ² (0.04 x 0.16 inch ²), length: each 1.0 m (39.37 inches) |
| Connector Type | Tyco plug |

Warranties and Certifications

| | |
|-----------------------|--|
| Product Warranty | Maximum 5 years for material and workmanship |
| Performance Guarantee | Guaranteed output of 90% for 10 years and 80% for 25 years |
| Certifications | According to IEC 61215, IEC 61730 and UL 1703 guidelines * |

* Please confirm other certifications with AUO official dealers



AU Optronics Corporation

No. 1, Li-Hsin Rd. 2, Hsinchu Science Park, Hsinchu 30078, Taiwan

Tel: +886-3-500-8899 Email: solar@auo.com www.AUO.com www.AUOsolar.com

AUO Green Solutions
Printed with Soy Ink

