

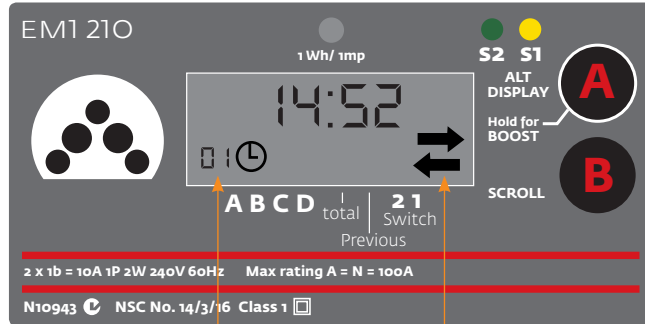
We do everything in our power to deliver yours

Single Phase Solar Import/Export Meter

Information about your solar-powered system and how to read your new solar import/export meter.

Solar Import/Export Meter

What the display on your new import/export meter will typically look like:



Display Item Number

Arrows indicate if the reading displayed is for energy used from the grid or for energy that has been put back into the grid.

- ➔ Energy used from the grid
- ➔ Energy put back into the grid

Note: usually there will only be one arrow displayed.

How to read your new meter

The display on your new meter will usually scroll through the various menus outlined below. You can manually scroll through them by pressing the B button.

Display Item Number (shown in bottom left hand corner of the display) indicates the following:

- 01 Time
- 02 Date
- 03 Peak tariff reading
- 07 Off peak load reading (not always available)
- 09 Cumulative energy put back into the grid in kWh (this is the amount of energy 'exported' to the grid)

Frequently asked questions

Q. What is the red light above the display on the meter for?

- A.** The red light indicates that you are consuming (importing) electricity from the grid. The light may appear to be off or flash very slowly when you are consuming very little electricity. It will flash faster or even appear to be constantly on when you are consuming greater amounts of electricity.

Q. How much power am I putting back (exporting) into the grid?

- A.** This is determined by how much energy your solar-powered system is generating and how much you are using. Any excess energy is exported to the grid.

Examples

EXPORT MODE (putting energy back into the grid)

If your solar-powered system generates 1000W and you are using 600W, then 400W will be put back (exported) to the grid.

IMPORT MODE (importing energy from the grid)

If your solar-powered system generates 1000W and you are using 1200W then you are using (importing) 200W from the grid.

Q. What is and how do I turn on the BOOST function?

- A.** The Boost function (if connected) can be used to manually switch on power to your off peak load for up to two hours in instances where you have run out of hot water. To activate the boost function, press and hold down the 'A' button. A countdown will commence and the display will show 'BOOST'.

Q. How much money will I get back from the power I 'export' back into the grid?

- A.** Your retailer will be able to provide you with this information.

Q. Why is the reading on my solar-powered system (if the unit is fitted with a display) not the same as the ETSA Utilities solar import/export meter?

- A.** The reading on your display (if fitted) on your solar-powered system shows the total amount of energy being generated by your solar-powered system at that time.

The ETSA Utilities solar import/export meter shows the total accumulated amount of solar energy your system has put back into the grid from the time it was first installed.

Q. Will my solar-powered system be able to generate power for use during a power failure to the area?

- A.** No, for safety reasons, your solar-powered system should automatically turn off during a network power failure.

Important information about your new meter

Your new solar-powered system requires a new meter which replaces your former ETSA Utilities meter.

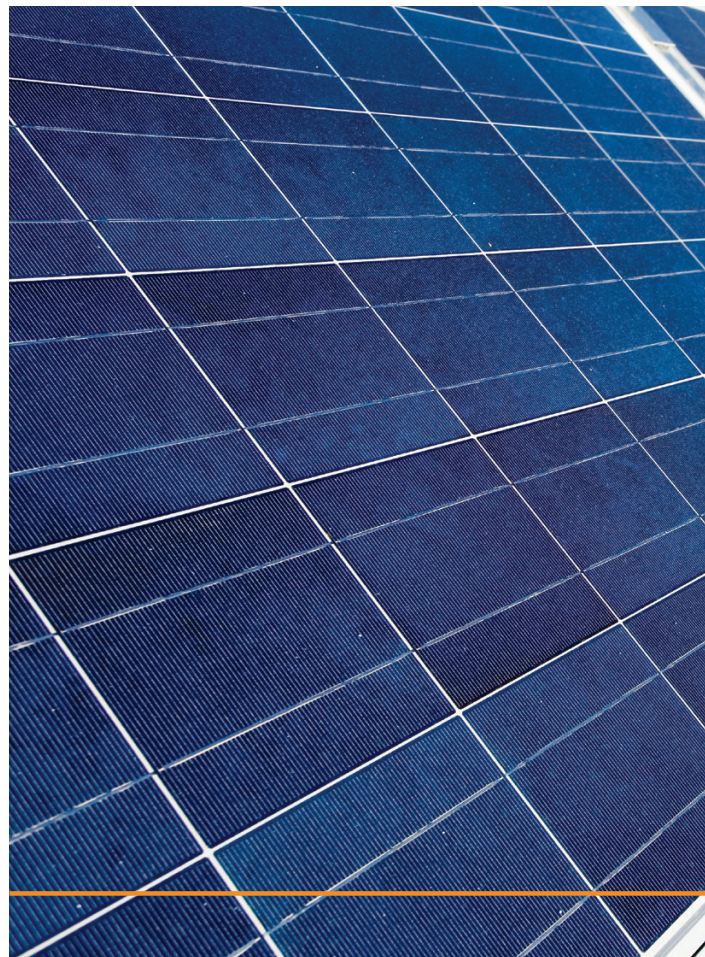
For your records, please find the final reading of the previous meter which has now been removed.

Removed meter number:

Reading:

For any billing and rebate enquiries, please contact your retailer.

If you would like further information about your new import/export meter, please contact ETSA Utilities Customer Service on **13 12 61**.



Printed by a carbon neutral process with recycled and sustainable forest fibre using world's best practice ISO 14001 Environmental Management Systems.