

# Modular Heavy Steel Commercial Solar Carport

## ATLAS SERIES



## Features & Advantages



**Strong heavy steel frame**  
Certified structure and panels



**Built-in waterproof design**  
Expandable modular system



**Pre-fabricated bolted modules**  
Quick and safe installation



**Long-term durable structure**  
Minimal maintenance required

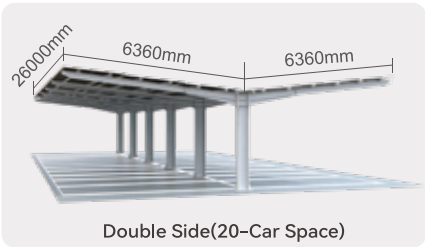


# Carport Specifications

Copyright © Umax Energy. Patented design.

## Structural Parameters

Material	Heavy Steel
Structure System	Welded mainframe with modular bolted connections
Design Standards	AS/NZS1170 & AS4100 (AU) Adaptable to international codes
Wind Load Capacity	Region A, B & C Configurable per site
Design Life	25 Years



	Single side (10 Parking Space)	Double side (20 Parking space)
System Size	38.52 kW	77.04 kW
Length	6360 mm	12720 mm
Structure Width	2600 mm	2600 mm
Total Panel Width	26000 mm	26000 mm
Clearance Height	3000 mm	3000 mm
Peak Height	4200 mm	4200 mm
No. of Panels	GoodWe Polaris 535 W x 72 PCS	GoodWe Polaris 535 W x 144 PCS
Footing	At least 700mm diameter pier with 2000mm depth	At least 800mm diameter pier with 2500mm depth

## Structure Details



Innovative waterproof design  
with GoodWe Polaris Panel



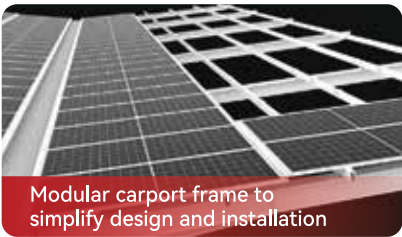
Overlapping installation  
to prevents water ingress



Under-Panel fixings to enable  
quicker and safer installation



Bolt-Only connections  
No on-site welding required



Modular carport frame to  
simplify design and installation









Integrated water management to  
suit various site conditions

## Umax Online Partner Platform

Visit [www.umaxenergy.com/orderlink](http://www.umaxenergy.com/orderlink) — everything you need to quote, configure, and manage your solar carport projects, all in one place.



Register Now

-  Instant Project Quotation
-  Carport Configurator Tool
-  System Sizing Calculator
-  Logistics & Packing Insights
-  Partner Order Dashboard
-  Exclusive Market Resources